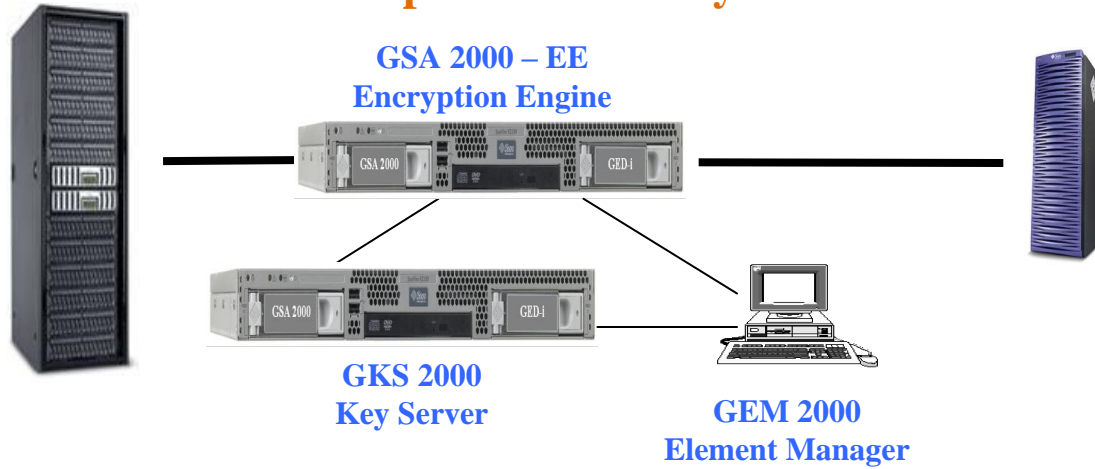


GED-I's Storage Security solutions Configuration
Oct 2008

“Superior” Security



“All In One”



Definitions:

- **Superior Model** – GED-I’s security solution based on two appliances. The GSA 2000-EE is the encryption engine while the GKS supports all the Key Server capabilities including Keys management, automatic high availability, connection to several GSA 2000-EE at the same time, etc. See figure A.
- **AIO (All in One) Model** – GED-I’s security solution in a single appliance. The GSA 2000 consists of the Encryption Engine (EE) and the Key Utility (GKU) in the same appliance. The key file is saved on an external unit such as Disk on Key, CD or external Disk. No integrated key management functionalities are included. See figure B.

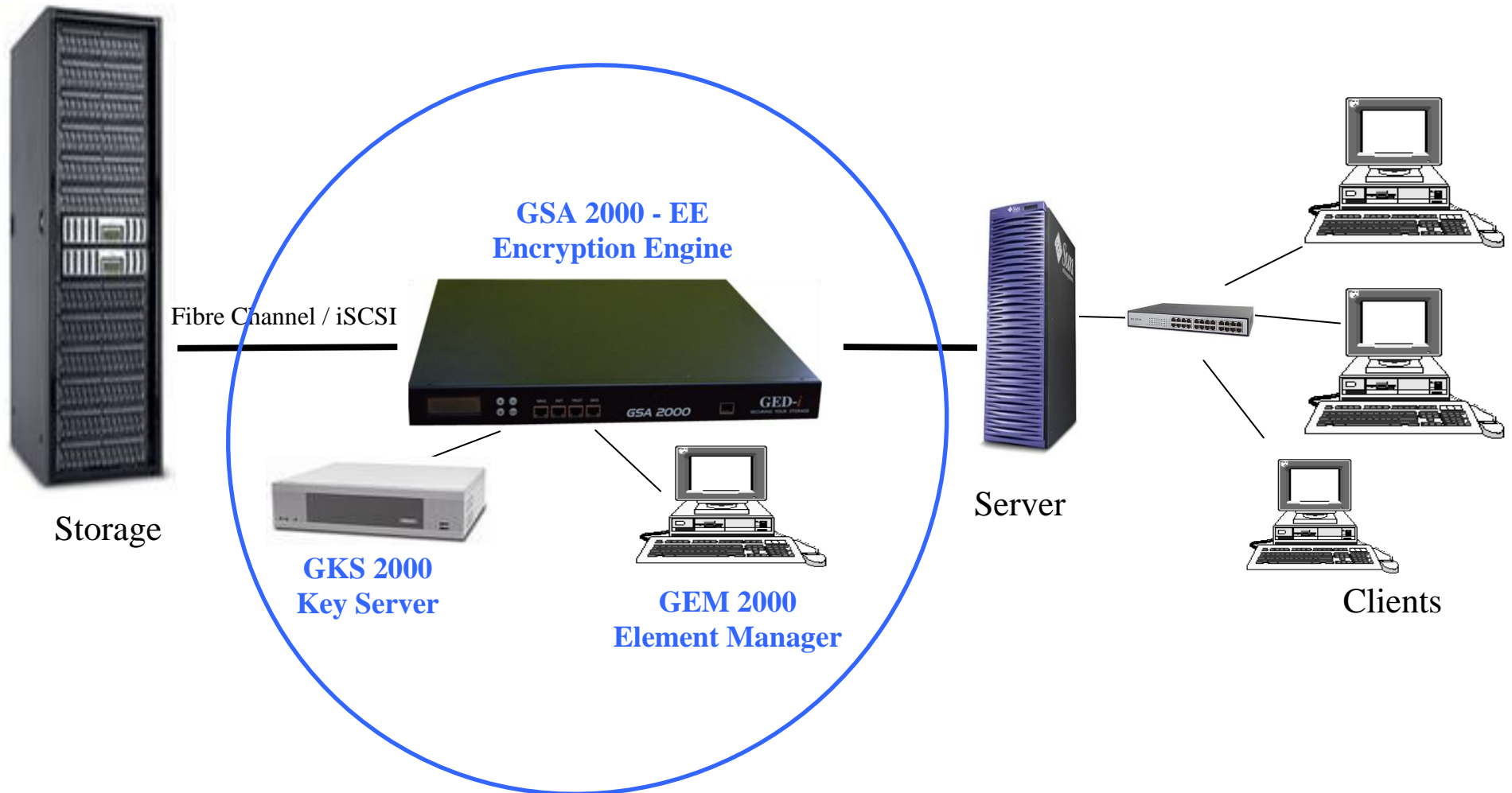
Comparison Table: AIO .vs. Superior

#	Item	AIO	Superior
1	Dedicated key server - GKS 2000	Not Included	Included
2	High Availability	Manual	Automatic
3	Physical Gap	Not included	Included
4	TRNG	Not included	Included
5	Key File backup/restore	Not Included	Included
6	Secured storage volume	Limited (14 TB)	Unlimited
7	GKS – GSA connectivity	None	Multi
8	Administration	Different administrators for operation and keys on the SAME unit	Different administrators for operation and keys on separated units
9	Components high availability	None	Power supplier

Superior configuration – Figure A1

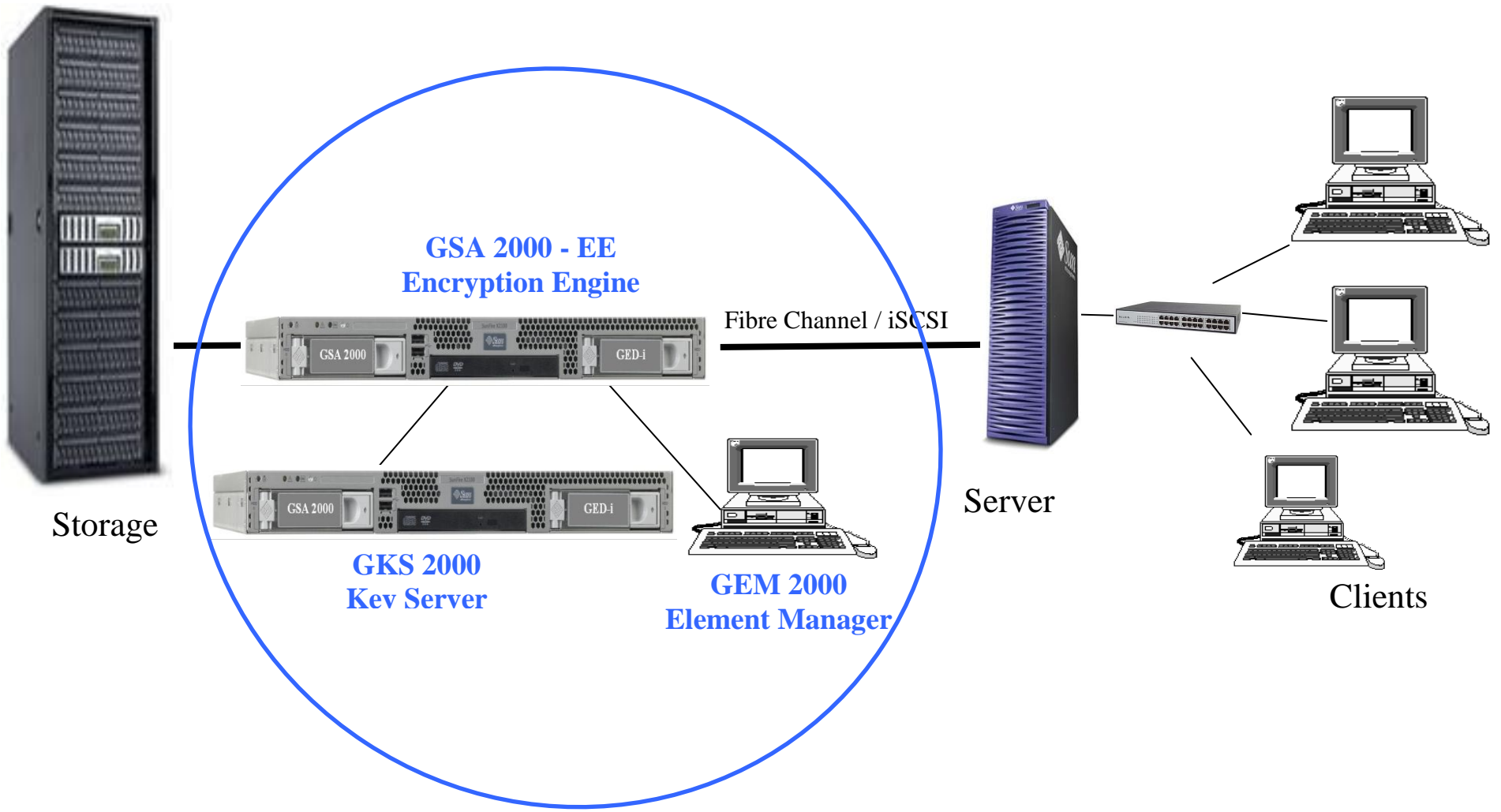
GSA 2000-EE based on Nar 5610 by Portwell

GKS 2000 based on Wade by Portwell



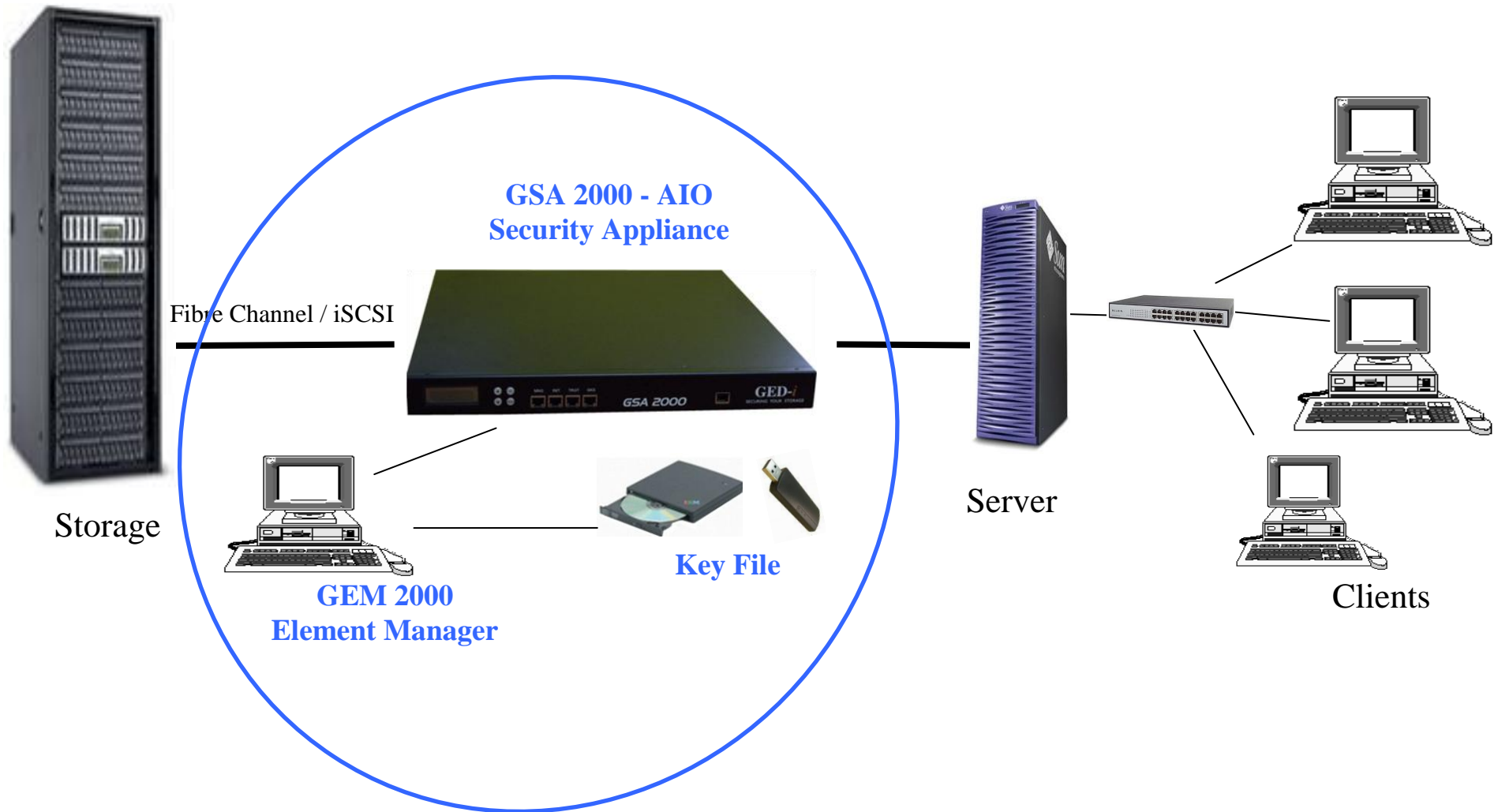
Superior configuration – Figure A2

*GSA 2000-EE based on Sun Fire X2100 by Sun Microsystems Co.
GKS 2000 based on Sun Fire X2100 by Sun Microsystems Co.*



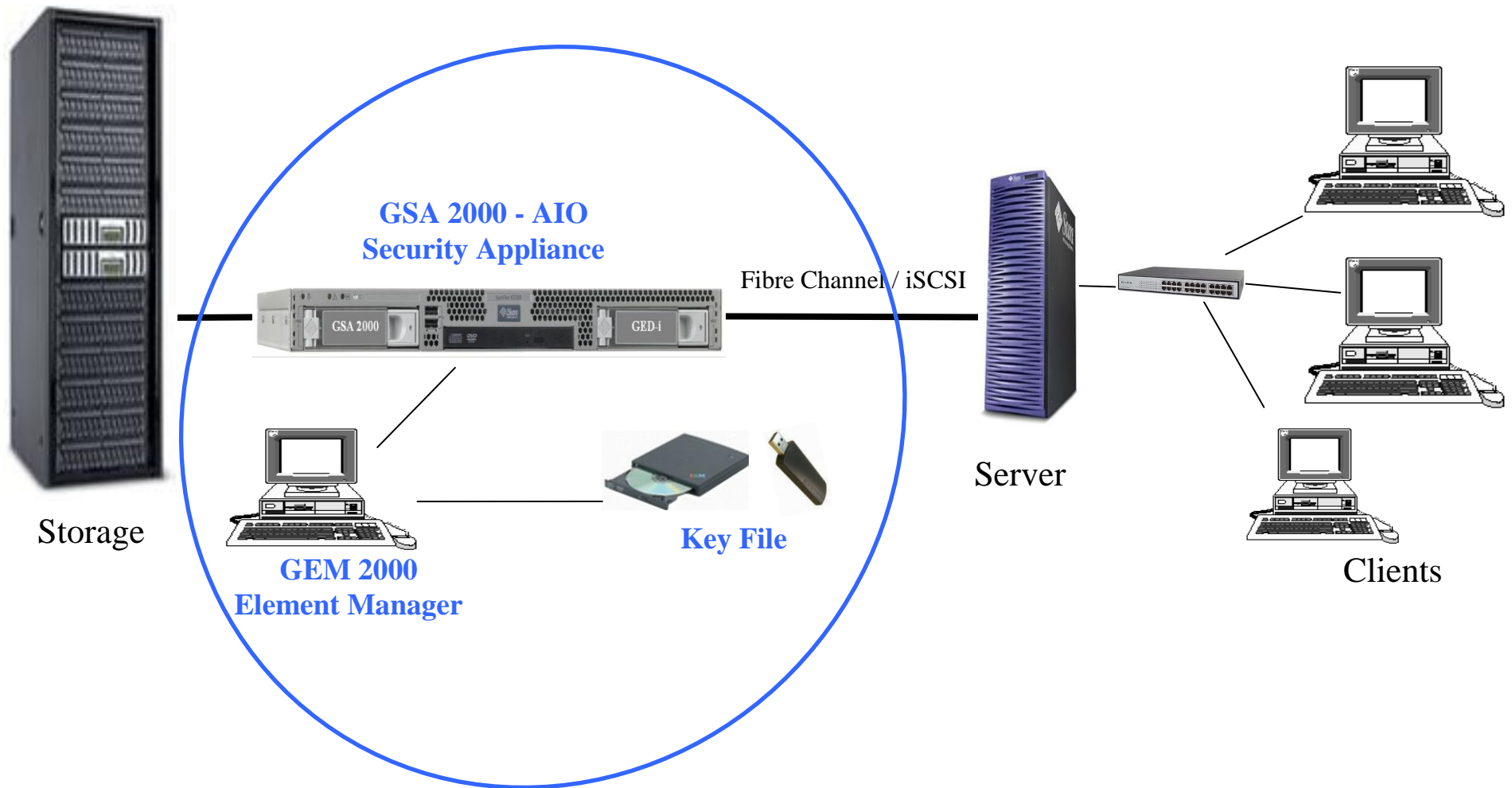
All In One (AIO) Configuration – Figure B1.

GSA 2000-AIO based on Nar 5610 by Portwell



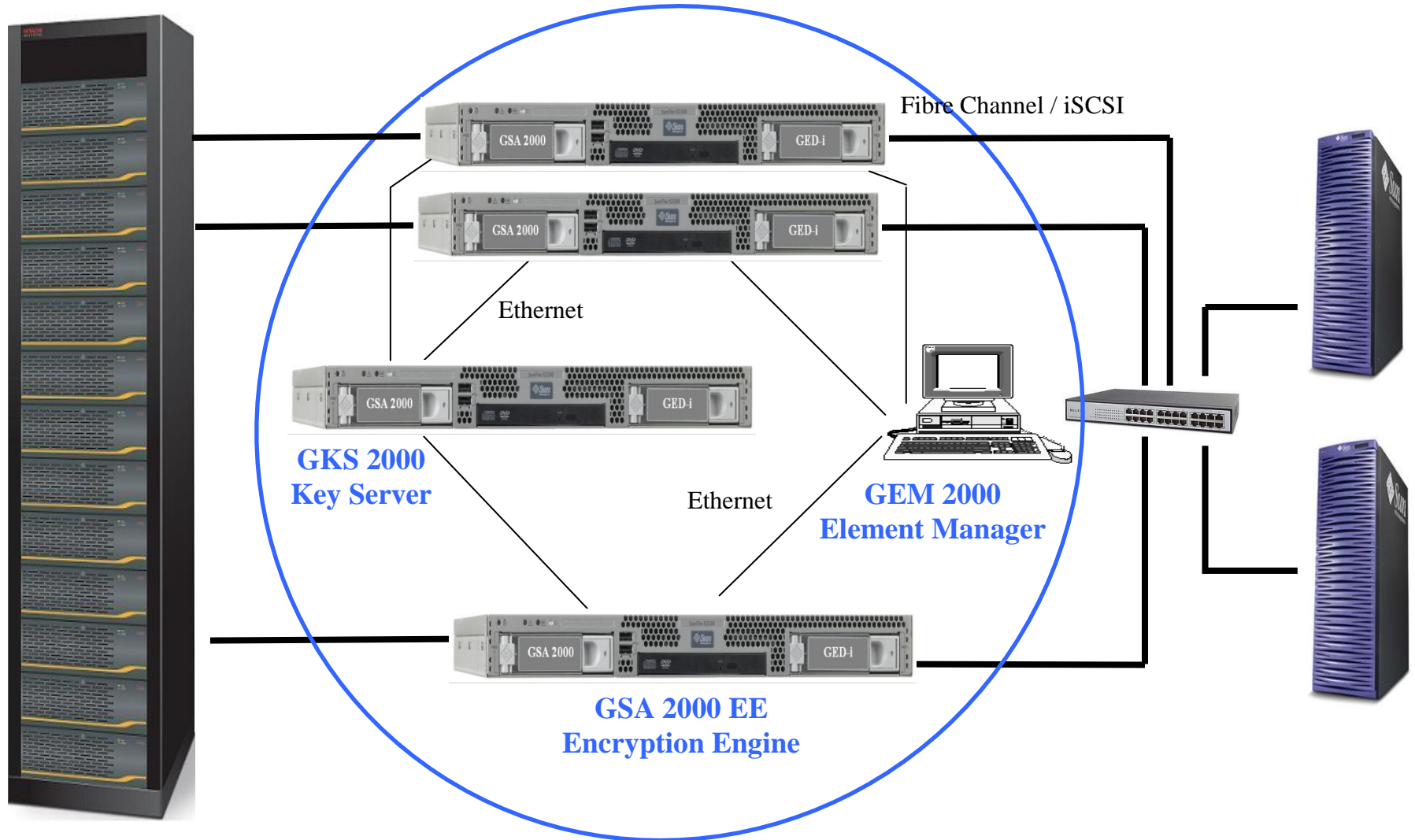
All In One (AIO) Configuration – Figure B2.

GSA 2000-AIO based on Sun Fire X2100 by Sun Microsystems Co.



High Availability - Superior configuration – Figure C1

*GSA 2000-EE based on Sun Fire X2100 by Sun Microsystems Co.
GKS 2000 based on Sun Fire X2100 by Sun Microsystems Co.*



High Availability - Superior configuration – Figure C2

GSA 2000-EE based on Nar 5610 by Portwell
GKS 2000 based on Wade by Portwell

